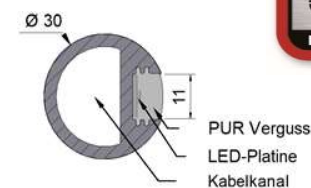
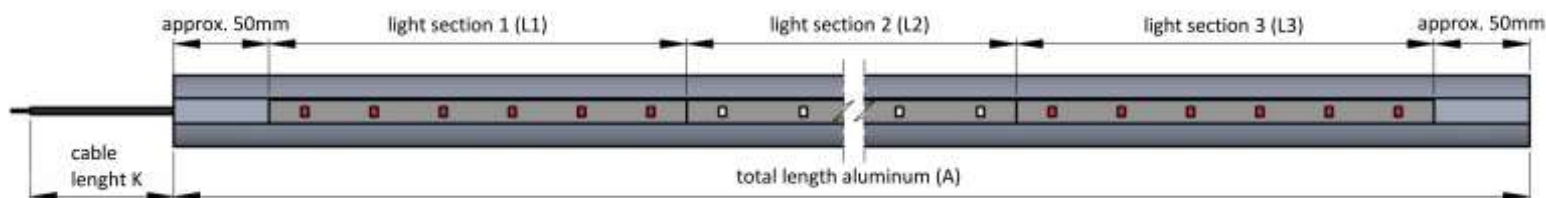
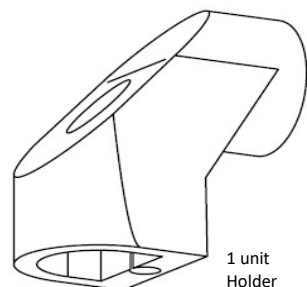


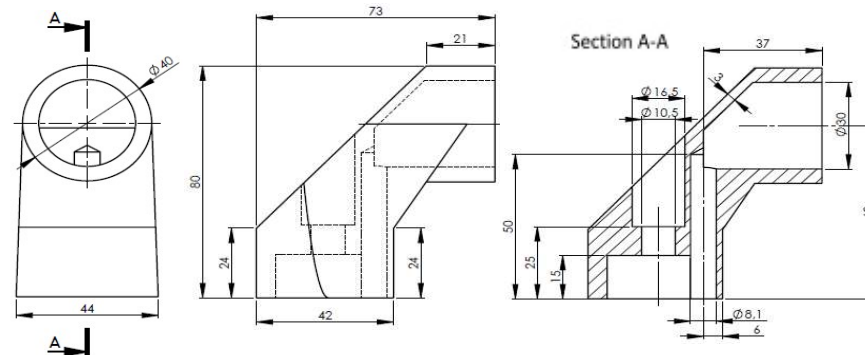
# LDR LED-Line - Handle



## Holder (H):



1 unit Holder  
110 g

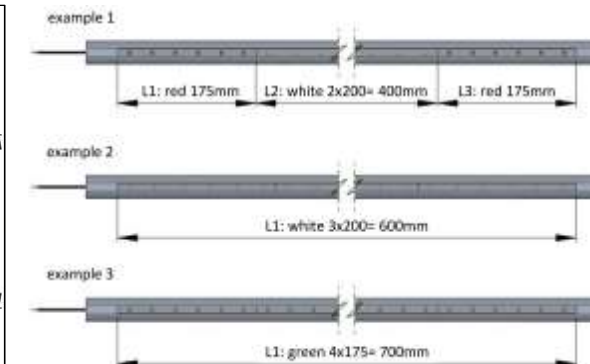


## Technical data:

- Please observe the required edge distance of 50 mm during configuration !
- Profile length of profile handle 30 mm is possible up to max. 5,300 mm.
- The board A30 (partition 200 mm, 30 pcs. LEDs/m) is used for this product as standard. Additional board variants: A60 (60 LEDs per metre, double luminous flux) / daylight white / colour board B30 in blue, B35 in red, green, blue and orange or RGB LEDs on request.
- The total installation length including holder (H) is A+ (2 x 52 mm).
- Grid dimension of mounting holes of holder (H) is length A+ (2 x 30 mm).
- Product weight approx. 0.84 kg/m without holder
- Colour temperature at A30 neutral white
- A30 (30 units LEDs per metre) B35 6 LEDs / partition
- IP protection class similar to 69 K
- Ambient temperature -40 deg. C up to +50 deg. C
- Product material: Aluminium profile powder-coated RAL 1018 (standard) or anodised E6/EV1 + polyurethane full encapsulation
- In conformity with REACH and RoHS
- Technical updates with reservation

## Installation instructions

- The safety instructions in the operating and assembly instructions must be observed !
- The white main lighting of the handlebar may only be used when the vehicle is stationary. Ideally, there should be a connection to the on-board electronics, which blocks operation while the vehicle is in motion (e.g. handbrake released -> LEDs off).
- Observe the respective operating voltage at the LDR LED Line product in every operating state !
- Keep the original connection cable of the LDR LED Line profiles short !
- The electrical installation must be carried out by qualified electricians / mechatronics technicians !
- Supply lines + back-up fuses must be dimensioned according to the electrical power consumption of the LED Line products to be connected !
- Power consumption of neutral white: 12 W/m at 12 V and 12.5 W/m at 24 V



Request: O		Order: O		Customer:		Commission:		Date:	
<b>Number of units:</b>									
<b>Light colour:</b>		<b>Neutral white</b>		<b>green (527 nm)</b>	<b>red (625 nm)</b>	<b>orange (590 nm)</b>	<b>blue (475 nm)</b>		
<b>Partition</b>		<b>A30: 200 mm</b>		175 mm	175 mm	120 mm	120 mm		
<b>Power of each partition:</b>		cf. Notes on installation		B35: 3.5 W	B35: 4.0 W	B50: 4.1 W	B50-4.2 W		
<b>Abbreviation</b>									
A	Total length of aluminium								
L1	Light section 1								
L2	Light section 2								
L3	Light section 3								
U	<b>Voltage 12 V OR 24 V</b>								
K	Cable L=750 mm standard								
H	Holder / support	Yes O	No O	up to 1,300 mm (A) two part, as from 1,300 mm (A) + supports in grid approx. 700 mm					
B	<b>Surface - aluminium profile</b>	<b>Powder coating RAL 1018 zinc yellow: O</b>		<b>Eloxal E6EV1: O</b>		<b>Special colour: _____ upon request</b>			
<b>Price net (EUR/unit):</b>									
<b>Delivery time / deadline:</b>									